



Ministry of National Health Services,  
Regulation and Coordination,  
Government of Pakistan



Ministry of National Health Services Regulations and Coordination  
.....



## Weekly Epidemiological Bulletin

# Integrated Disease Surveillance and response system

Islamabad week 15-2025 (07 April 2025 – 13 April, 2025)

### Highlight

**Table 1: District most frequently suspected cases reported during Epidemiological week-15**

Disease	AD	ILI	B. Diarrhea	Measles	Chick enpox	Viral Hep B C & D	Malaria	Tuberculosis	ALRI < 5 years
CHC Shah Allah Ditta	33	27							
CHC Kirpa	07	55							
CHC Rawat	21	34							
RHC Bhara kahu	44	220				01			
RHC Tarlai	35	102						04	
RHC Sihala	40	24						01	
BHU Gagri	14	42							
BHU Bhukhar	30	14		02	01				
BHU Bhimber Trar	02	07							
BHU Jagiot	03	0							
BHU Jhang Syedan	29	50							
BHU Chirrah	07	13							
BHU Tumair	04	04							
BHU Pind Begwal	16	05							
BHU Phulgran	36	30			04				01
BHU Shahdara	04	11							
BHU Sohan	08	13							
Humak Dispensary	16	38							
BHU Golra Sharif	18	13							
BHU Gokina	0	10							
CHC G-13	20	80							



Ministry of National Health Services,  
Regulation and Coordination,  
Government of Pakistan



Ministry of National Health Services Regulations and Coordination  
.....



**Table 2: Showing week 13-2025 to 14-2025 IDSR –SITUATION REPORT**

S No.		Week 13	Week 14	Week 15
1	Number of sites Reported	20	21	21
2	Influenza like Illness	582	275	792
3	AD (non-Cholera)	205	147	387
4	Bloody Diarrhea	0	02	02
5	Chickenpox/Varicella	02	01	05
6	Malaria	0	0	0
7	ALRI < 5 years	03	0	04
8	Measles	0	0	0
9	Typhoid	0	0	0
10	Dengue	0	0	0



Ministry of National Health Services,  
Regulation and Coordination,  
Government of Pakistan



Ministry of National Health Services Regulations and Coordination



WHO

## Week wise case report of AD & ILI, ICT

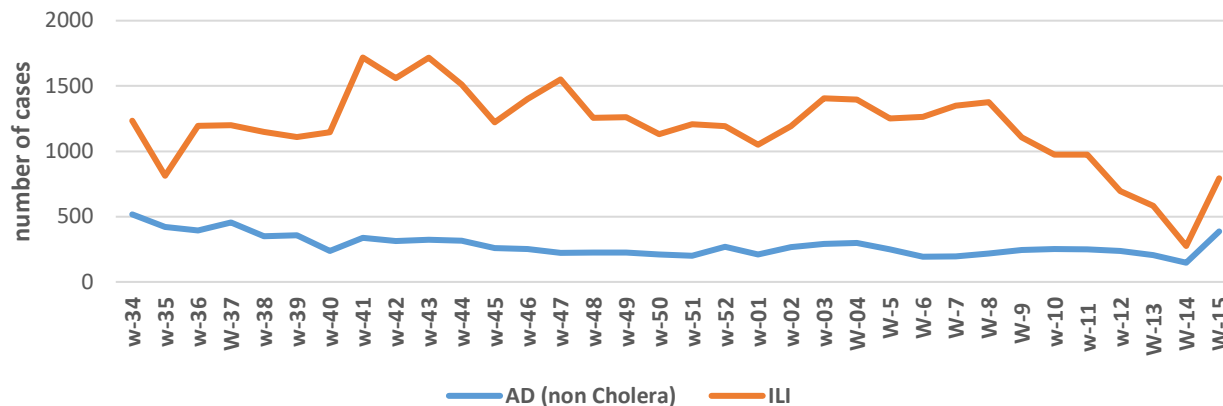


Figure 1: In week 15-2025, disease trends of ILI and acute diarrhea (non-cholera).

## Disease Status for Suspected Cases of Epid-Week 15-2025

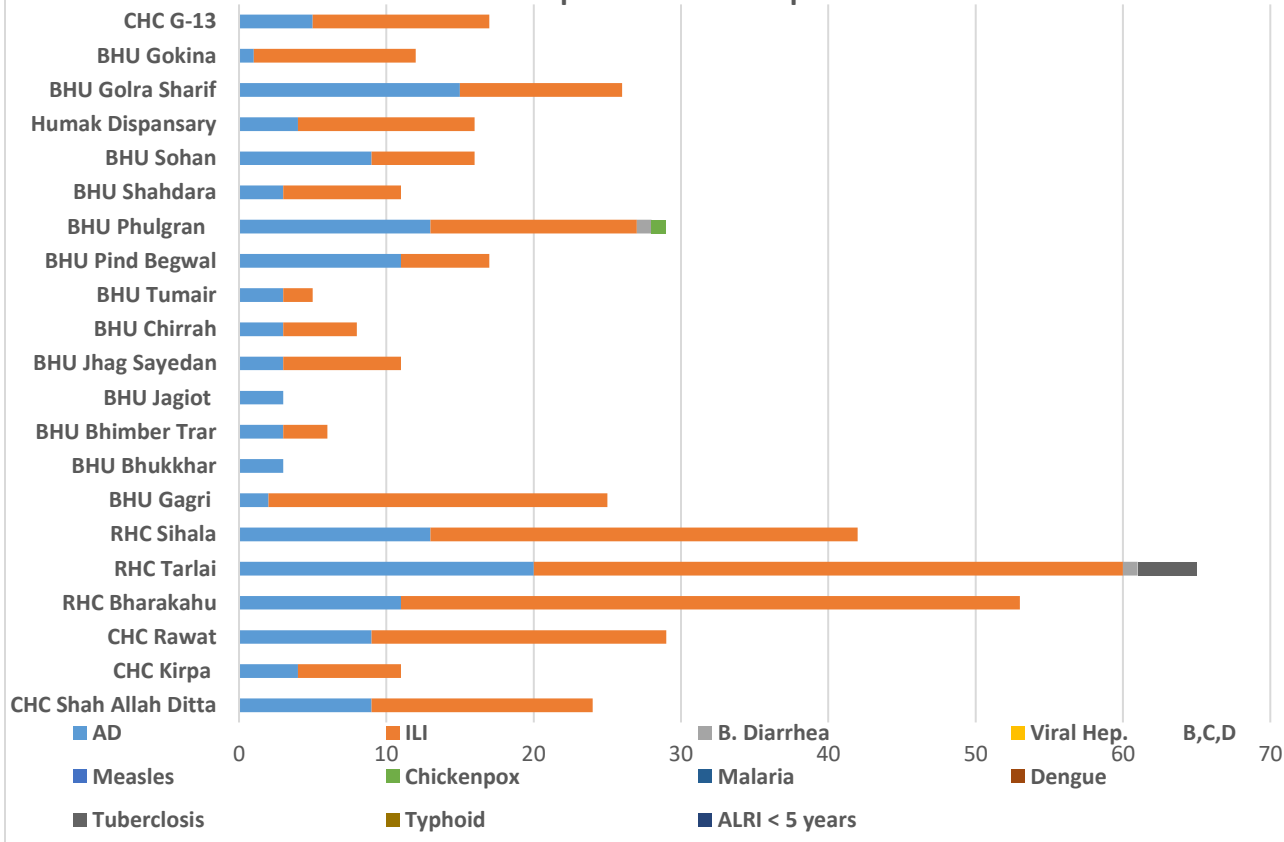


Figure 2: In week 15-2025, ILI has the upper trend with 387 cases followed by acute diarrhea (non-cholera) 792 cases.



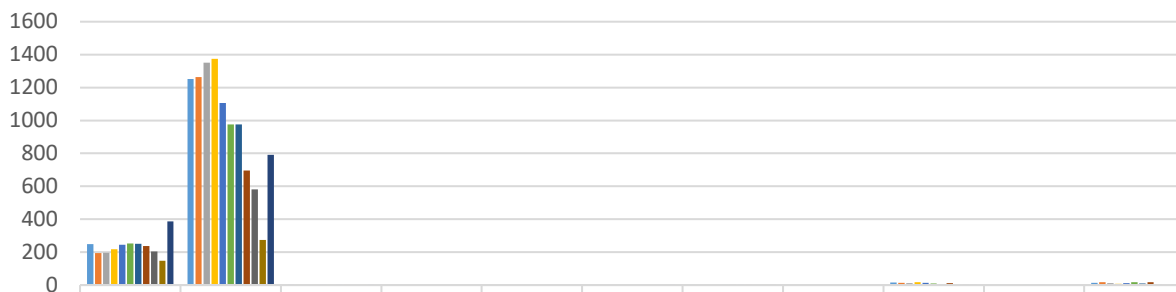
Ministry of National Health Services,  
Regulation and Coordination,  
Government of Pakistan



Ministry of National Health Services Regulations and Coordination



Most frequently reported cases during epid week 01-2025 to 15- 2025



	AD	ILI	B. Diarrhea	Malaria	Measles	Viral Hep	Chickenpox	Dengue	Tuberculosis	Typhoid	ALRI < 5 years
week 05-2025	249	1252	3	0	0	0	1	0	15	0	13
week 06-2025	194	1263	2	0	0	0	0	0	14	0	18
week 07-2025	196	1350	1	0	0	0	0	0	12	2	11
week 08-2025	218	1375	2	0	0	0	0	0	17	0	8
week 09-2025	245	1106	3	0	0	0	1	0	14	1	12
week 10-2025	253	975	1	0	0	0	5	0	9	0	18
week 11-2025	250	975	1	0	0	0	1	0	6	1	9
week 12-2025	238	696	2	0	0	0	1	0	11	0	17
week 13-2025	205	582	0	0	0	0	2	0	2	0	3
week 14-2025	147	275	2	0	0	0	1	0	4	0	0
week 15-2025	387	792	2	0	0	1	5	0	5	0	4

■ week 05-2025 ■ week 06-2025 ■ week 07-2025 ■ week 08-2025 ■ week 09-2025 ■ week 10-2025  
■ week 11-2025 ■ week 12-2025 ■ week 13-2025 ■ week 14-2025 ■ week 15-2025

Figure 3: There is increase in number of AD (non-Cholera) & ILI Cases in week 15-2025.

## COVID highlight

### Sampling Reports Feb 07<sup>th</sup> to 13<sup>th</sup> Apr. 2025

Total Positive	Total Negative	Total Pending	Total Sample Taken
0	0	0	0

Table 3: Showing 0 % positivity rate during epidemiological week 15-2025.



Ministry of National Health Services,  
Regulation and Coordination,  
Government of Pakistan



Ministry of National Health Services Regulations and Coordination  
.....



## Expanded Program on Immunization activities of Health Department ICT

EPI in Pakistan is coordinated at Federal Directorate of Immunization under the Ministry of National Health Services and Regulation Coordination (NHSR&C). The EPI program shall be including vaccines for prevention of vaccine preventable diseases among the adolescents and older age groups as the evidence of vaccines' effectiveness is acquired and advised by the NITAG. The immunization schedule shall thus be periodically updated as and when required depending upon the local disease burden and requirements. The health department with an objective to improve the health of all works on prevention of the diseases EPI is one of the major components. The EPI at district level is managed and supported by staff at district level and the EPI services are provided at Union council level through Fixed Centers, Outreach Vaccination sites and mobile if applicable.

Total EPI Coverage Antigen wise coverage in ICT rural during week 15-2025

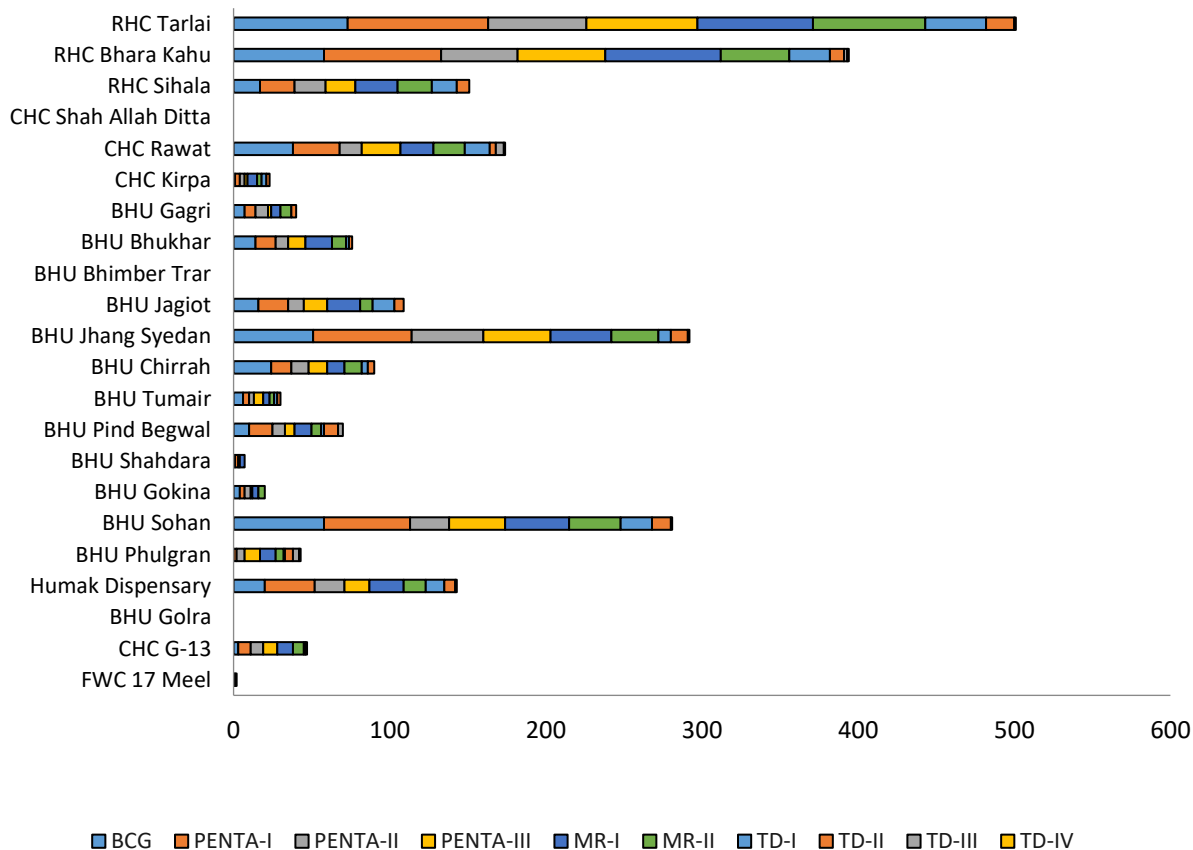


Figure 4: In week 15-2025, total coverage vaccine wise. BCG 208, Penta I 318, Penta II 258, Penta III 229, MR I 217, MR II 173, TD-I 93, TD-II 49, TD-III 11 and TD-IV-V 9.



Ministry of National Health Services,  
Regulation and Coordination,  
Government of Pakistan



Ministry of National Health Services Regulations and Coordination



WHO

### Total EPI Coverage in ICT rural during week 15-2025

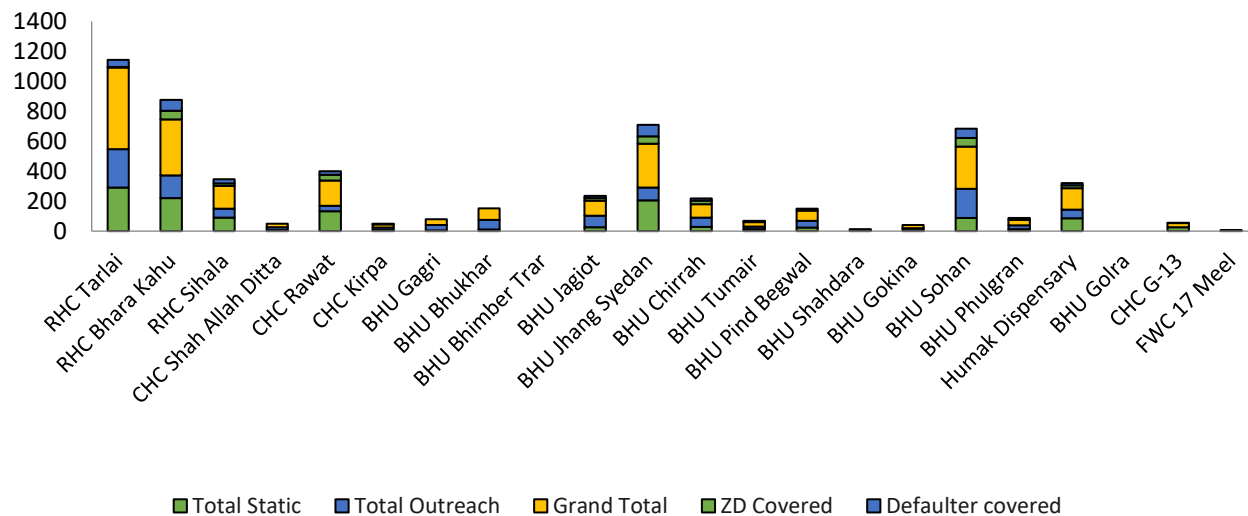


Figure 5: In week 15-2025, Total static coverage was 814, Outreach total was 741 Zero dose covered were 152 and defaulter covered were 220.

### Total EPI coverage of Private sector hospitals antigen wise- Week 15-2025

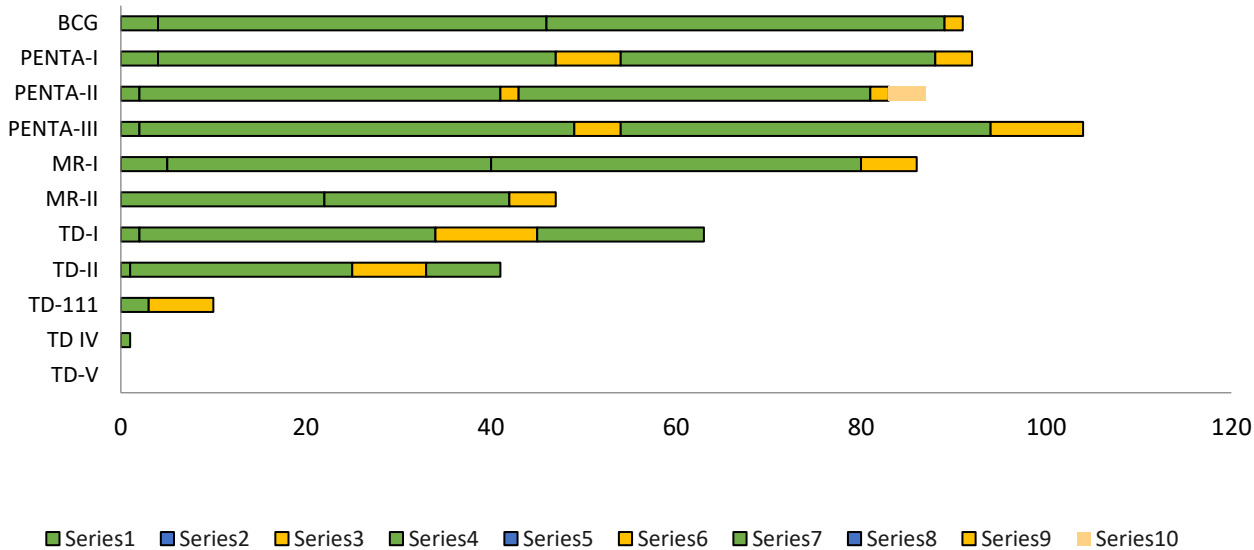


Figure 6: There is vaccine coverage of Public private partnership with private hospitals. In week 15-2025 a total of 981 doses of different antigen were given by hospitals in private sector.



Ministry of National Health Services,  
Regulation and Coordination,  
Government of Pakistan



Ministry of National Health Services Regulations and Coordination



## Dengue Surveillance

The District Health Office Islamabad's surveillance teams remained actively engaged throughout the week, focusing on high-risk areas for dengue. Field teams conducted vector surveillance, identified and eliminated mosquito breeding sites, and carried out community awareness activities on dengue prevention.

