



Ministry of National Health Services,
Regulation and Coordination,
Government of Pakistan



Ministry of National Health Services Regulations and Coordination
.....



Weekly Epidemiological Bulletin

Integrated Disease Surveillance and response system

Islamabad week 18-2025 (28 April 2025 – 04 May, 2025)

Highlight

Table 1: District most frequently suspected cases reported during Epidemiological week-18

Disease	AD	ILI	B. Diarrhea	Measles	Chick enpox	Viral Hep B C & D	Malaria	Tuberculosis	ALRI < 5 years
CHC Shah Allah Ditta	41	45							
CHC Kirpa	21	35							
CHC Rawat	38	119							
RHC Bhara kahu	78	291			01				
RHC Tarlai	53	116							
RHC Sihala	38	97							
BHU Gagri	15	40							
BHU Bhukkhar	26	17							
BHU Bhimber Trar	07	17							
BHU Jagiot	12	04							
BHU Jhang Syedan	18	25							
BHU Chirrah	08	15							
BHU Tumair	15	04							
BHU Pind Begwal	20	25							
BHU Phulgran	34	34							
BHU Shahdara	13	16							
BHU Sohan	12	08							
Humak Dispensary	10	35							
BHU Golra Sharif	22	14		01					
BHU Gokina	13	21							
CHC G-13	17	14	01						



Ministry of National Health Services,
Regulation and Coordination,
Government of Pakistan



Ministry of National Health Services Regulations and Coordination
.....



Table 2: Showing week 16-2025 to 18-2025 IDSR –SITUATION REPORT

S No.		Week 16	Week 17	Week 18
1	Number of sites Reported	21	21	21
2	Influenza like Illness	741	1026	1015
3	AD (non-Cholera)	462	576	511
4	Bloody Diarrhea	04	01	01
5	Chickenpox/Varicella	02	08	01
6	Malaria	0	0	0
7	ALRI < 5 years	05	02	0
8	Measles	0	0	01
9	Typhoid	01	0	0
10	Dengue	0	0	0



Ministry of National Health Services,
Regulation and Coordination,
Government of Pakistan



Ministry of National Health Services Regulations and Coordination



WHO

Week wise case report of AD & ILI, ICT

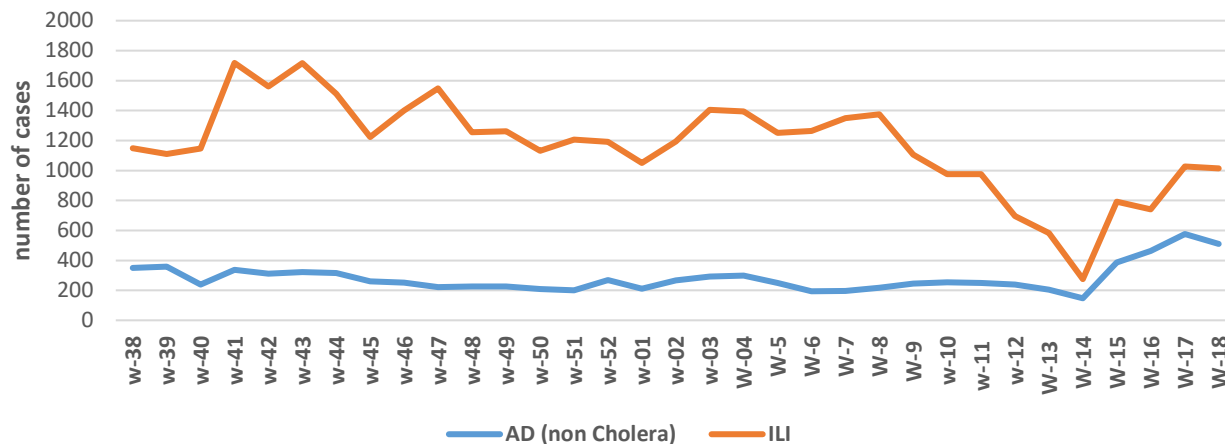


Figure 1: In week 18-2025, disease trends of ILI and acute diarrhea (non-cholera).

Disease Status for Suspected Cases of Epid-Week 18-2025

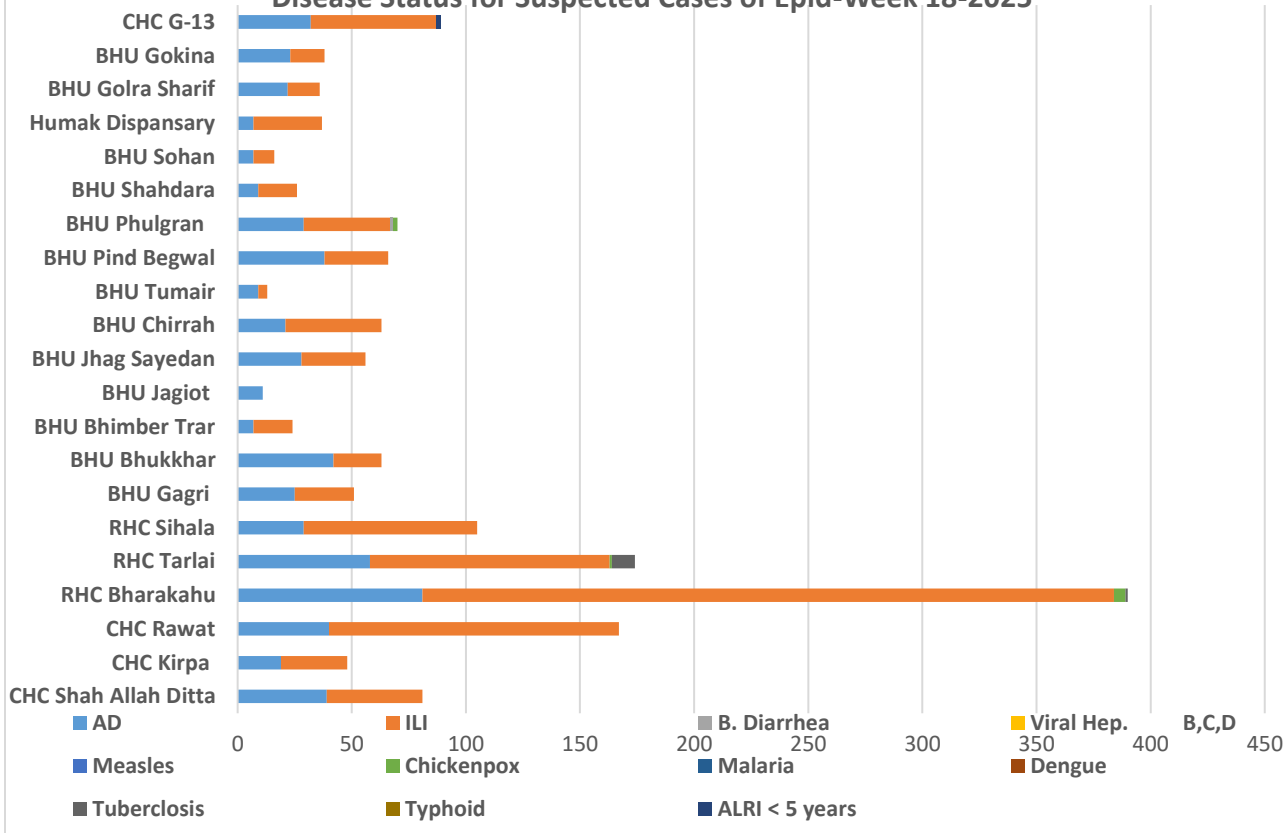


Figure 2: In week 18-2025, ILI has the upper trend with 511 cases followed by acute diarrhea (non-cholera) 1015 cases.



Ministry of National Health Services,
Regulation and Coordination,
Government of Pakistan



Ministry of National Health Services Regulations and Coordination



Most frequently reported cases during epid week 08-2025 to 18- 2025



	AD	ILI	B. Diarrhea	Malaria	Measles	Viral Hep	Chickenpox	Dengue	Tuberculosis	Typhoid	ALRI < 5 years
week 08-2025	218	1375	2	0	0	0	0	0	17	0	8
week 09-2025	245	1106	3	0	0	0	1	0	14	1	12
week 10-2025	253	975	1	0	0	0	5	0	9	0	18
week 11-2025	250	975	1	0	0	0	1	0	6	1	9
week 12-2025	238	696	2	0	0	0	1	0	11	0	17
week 13-2025	205	582	0	0	0	0	2	0	2	0	3
week14-2025	147	275	2	0	0	0	1	0	4	0	0
week 15-2025	387	792	2	0	0	1	5	0	5	0	4
week 16-2025	462	741	4	0	0	0	2	0	11	1	5
week 17-2025	576	1026	1	0	0	0	8	0	11	0	2
week 18-2025	511	1015	1	0	1	0	1	0	0	0	0

■ week 08-2025 ■ week 09-2025 ■ week 10-2025 ■ week 11-2025 ■ week 12-2025 ■ week 13-2025
■ week14-2025 ■ week 15-2025 ■ week 16-2025 ■ week 17-2025 ■ week 18-2025

Figure 3: There is decrease in number of AD (non-Cholera) & decrease in ILI Cases in week 18-2025.

COVID highlight

Sampling Reports May 28th Apr to 4th May. 2025

Total Positive	Total Negative	Total Pending	Total Sample Taken
0	0	0	0

Table 3: Showing 0 % positivity rate during epidemiological week 18-2025.



Ministry of National Health Services,
Regulation and Coordination,
Government of Pakistan



Ministry of National Health Services Regulations and Coordination
.....



Expanded Program on Immunization activities of Health Department ICT

EPI in Pakistan is coordinated at Federal Directorate of Immunization under the Ministry of National Health Services and Regulation Coordination (NHSR&C). The EPI program shall be including vaccines for prevention of vaccine preventable diseases among the adolescents and older age groups as the evidence of vaccines' effectiveness is acquired and advised by the NITAG. The immunization schedule shall thus be periodically updated as and when required depending upon the local disease burden and requirements. The health department with an objective to improve the health of all works on prevention of the diseases EPI is one of the major components. The EPI at district level is managed and supported by staff at district level and the EPI services are provided at Union council level through Fixed Centers, Outreach Vaccination sites and mobile if applicable.

Total EPI Coverage Antigen wise coverage in ICT rural during week 18-2025

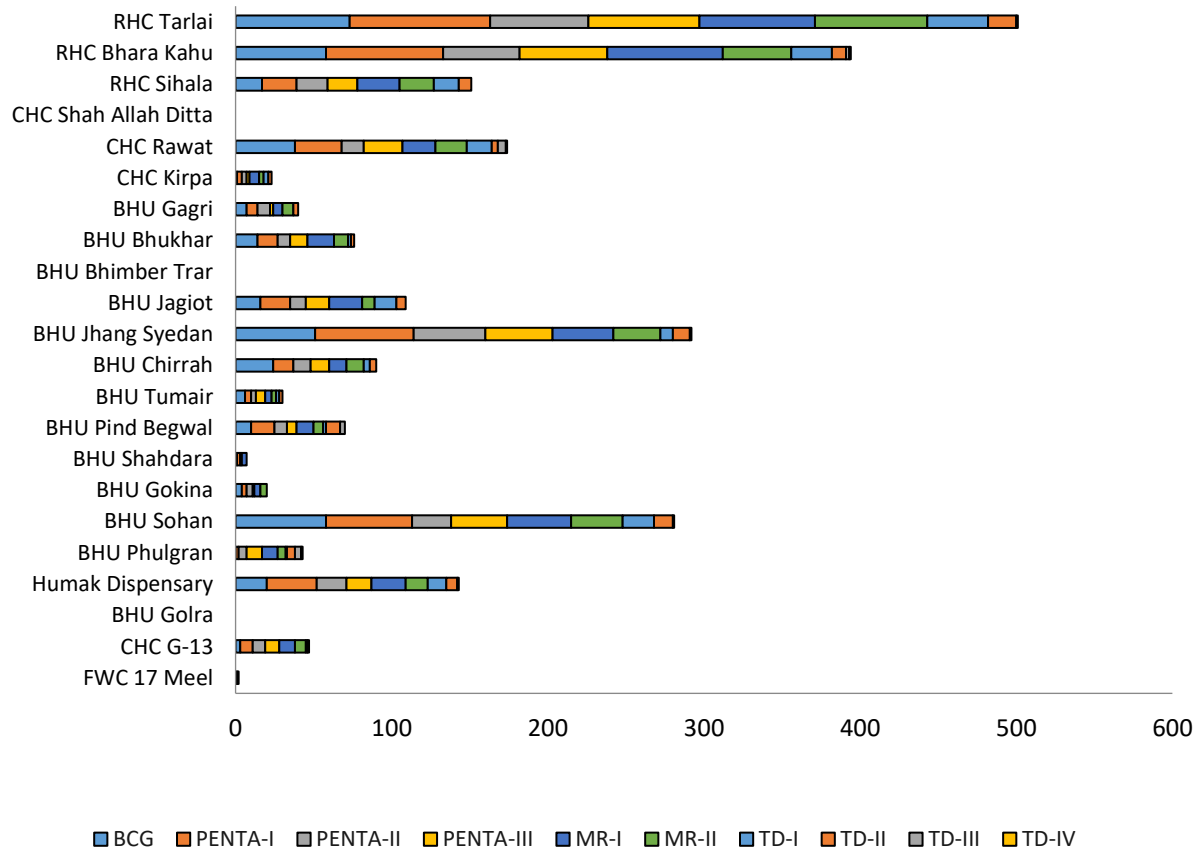


Figure 4: In week 18-2025, total coverage vaccine wise. BCG 221, Penta I 302, Penta II 233, Penta III 214, MR I 168 MR II 119, TD-I 74, TD-II 27, TD-III 08 and TD-IV-V 4.



Ministry of National Health Services,
Regulation and Coordination,
Government of Pakistan



Office of the District Health Officer
ISLAMABAD
Ministry of National Health Services Regulations and Coordination



Total EPI Coverage in ICT rural during week 18-2025

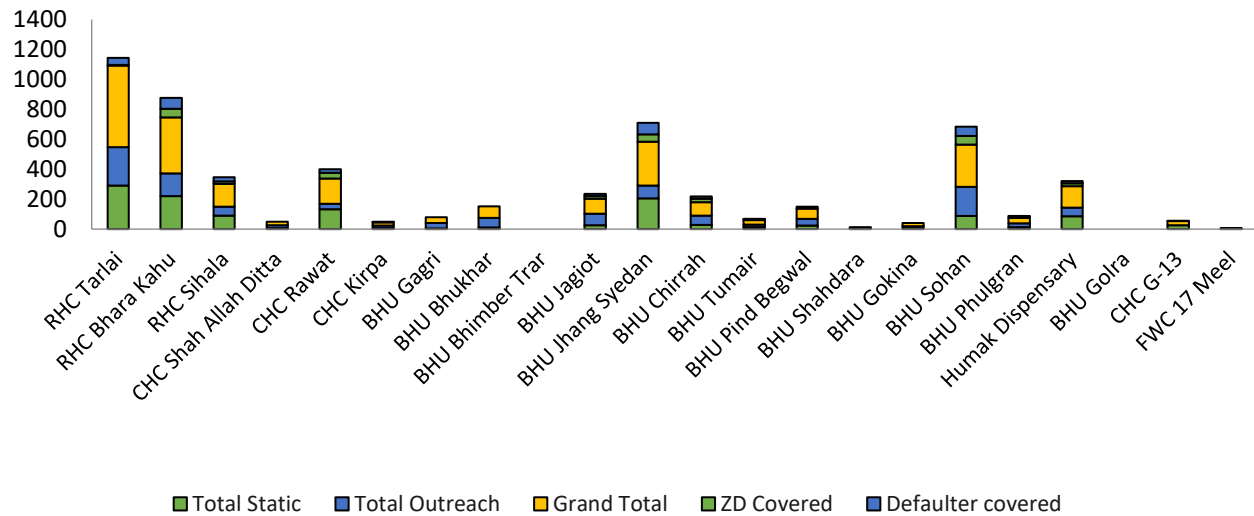


Figure 5: In week 18-2025, Total static coverage was 951, Outreach total was 410 Zero dose covered were 133 and defaulter covered were 198.

Total EPI coverage of Private sector hospitals antigen wise- Week 18-2025

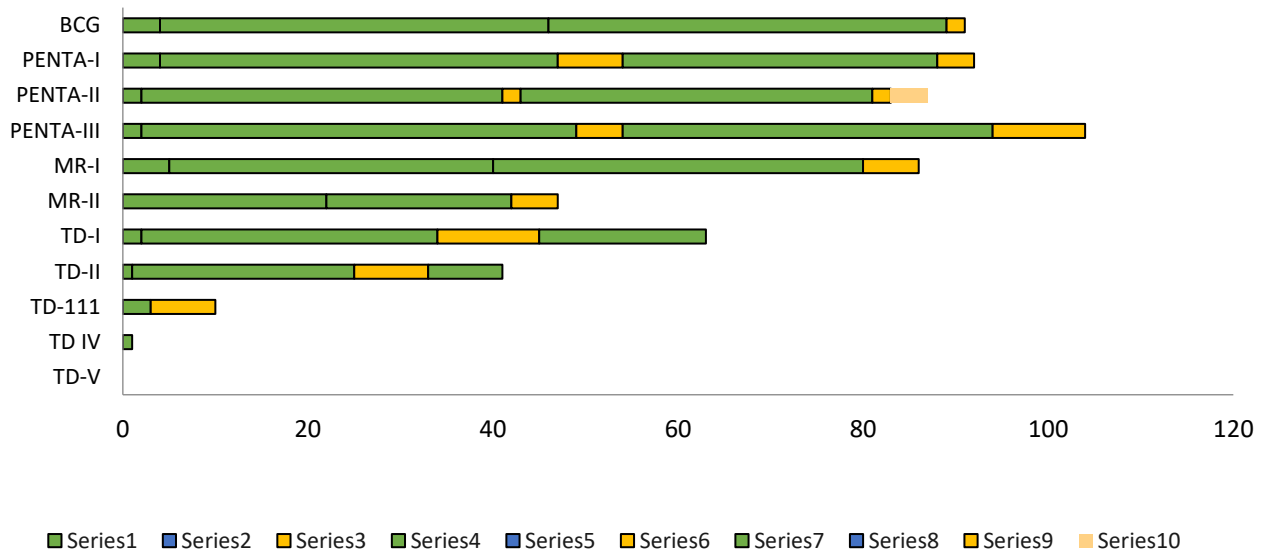


Figure 6: There is vaccine coverage of Public private partnership with private hospitals. In week 18-2025 a total of 762 doses of different antigen were given by hospitals in private sector.



Ministry of National Health Services,
Regulation and Coordination,
Government of Pakistan



Ministry of National Health Services Regulations and Coordination



Surveillance

The District Health Office Islamabad's surveillance teams remained actively engaged throughout the week, focusing on high-risk areas for dengue and measles. Field teams conducted vector surveillance, identified and eliminated mosquito breeding sites, and carried out community awareness activities on dengue prevention. Additionally, teams monitored suspected measles cases and sensitized the community about early signs, prevention, and the importance of timely vaccination.

